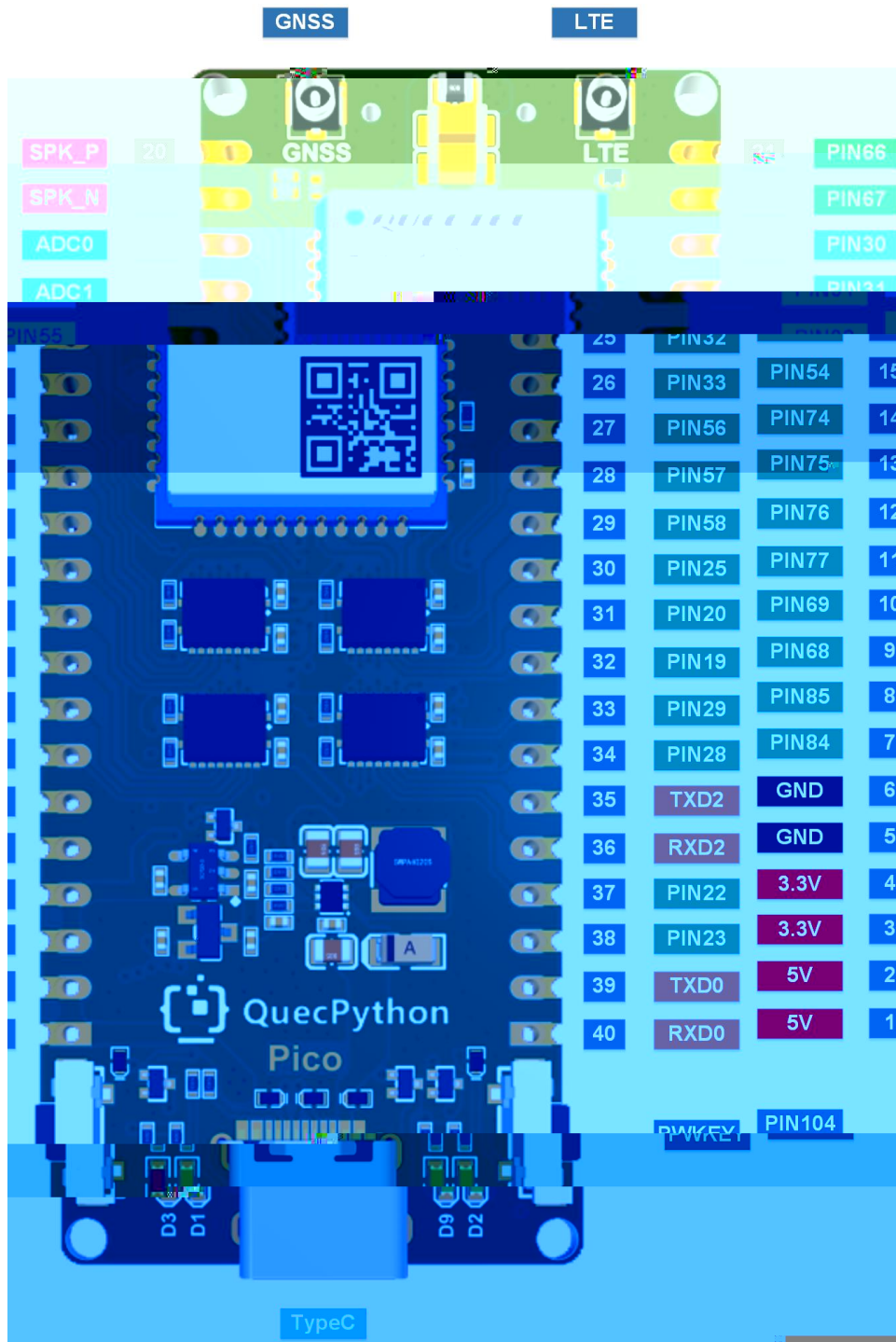


# EC800X Pico



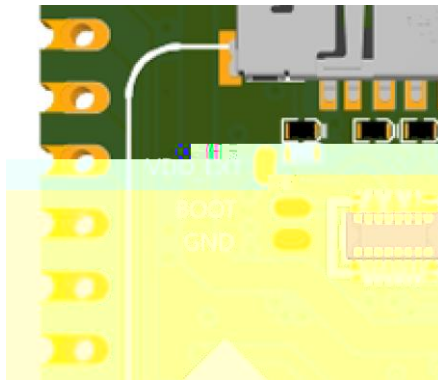
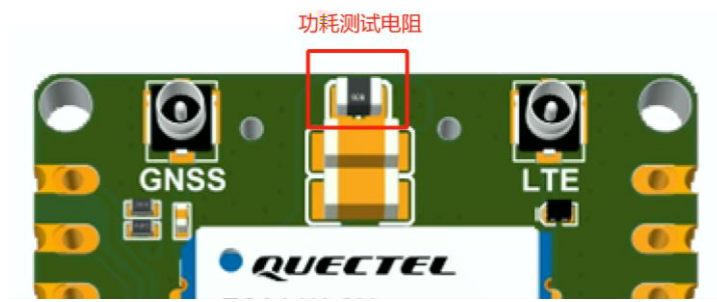


- -
- 2
- 2.1

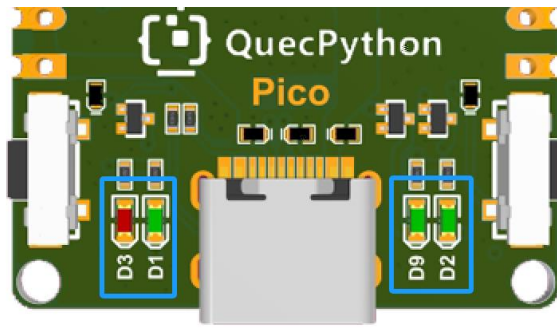




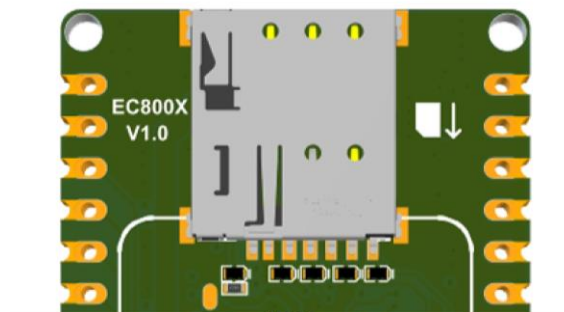




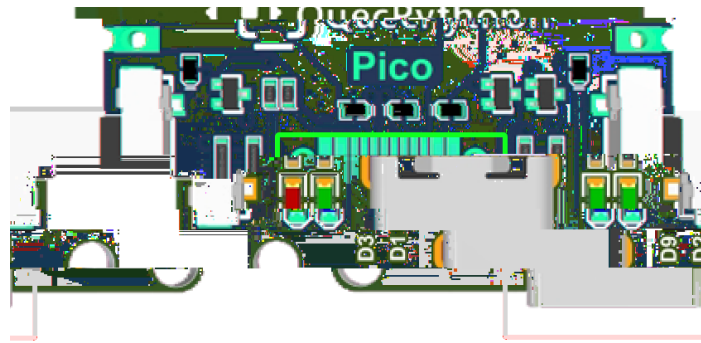
## 2.3



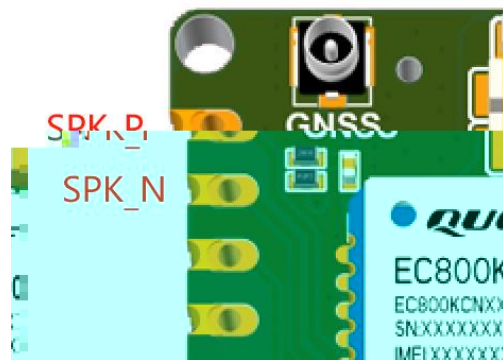

### 3 SIM



## 4 USB

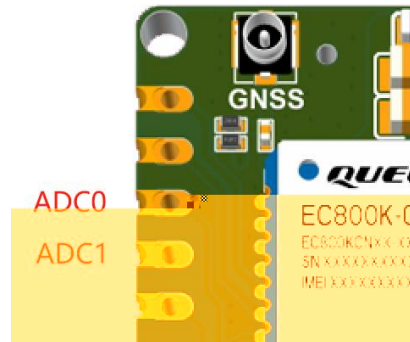


## 5 SPK



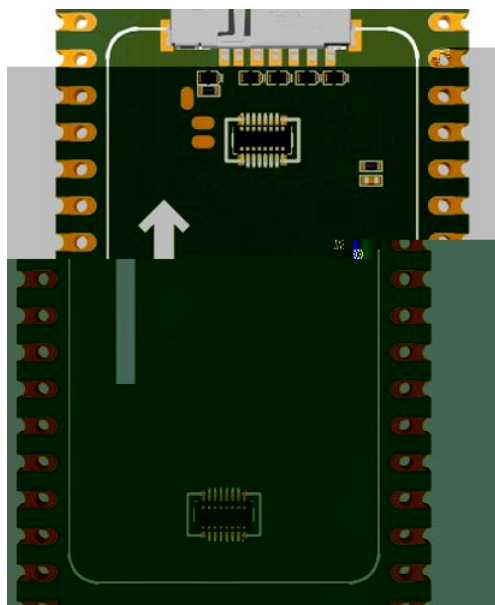
- 
-

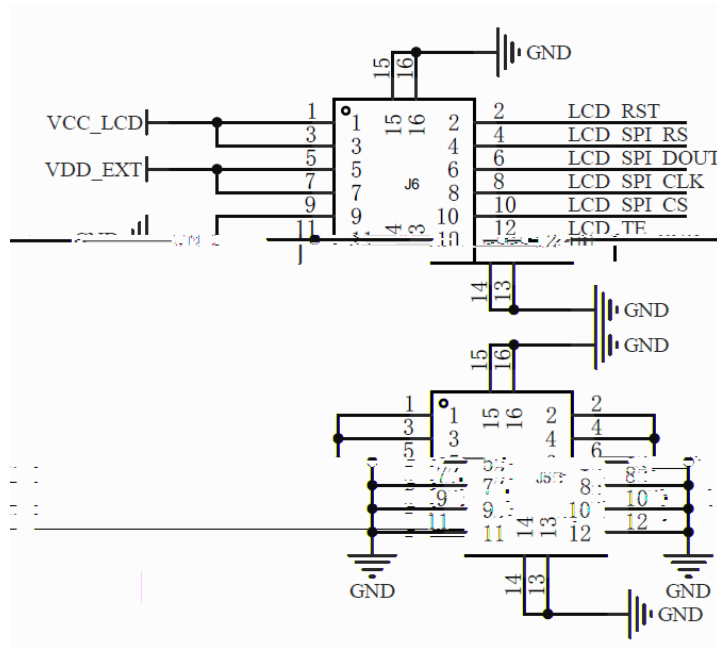
## 6 ADC



参数	最小值	典型值	最大值	单位
ADC0 电压	0	-	1.2	V
ADC1 电压	0	-	1.2	V
ADC 分辨率	-	-	12	位

## 7 LCD





NO.	Item	Contents	Unit
1	LCD Size	1.47	inch
2	Display Mode	Normally black	-
3	Resolution	172(H)RGB x320(V)	pixels
4	Pixel pitch	0.0337(H) x 0.1011(V)	mm
5	Active area	17.3892(H) x 32.352(V)	mm
6	Module size	19.20(H) x 32.35(V) x 1.47(D)	mm
7	Pixel arrangement	RGB Vertical stripe	
8	Interface	4 Line SPI	
9	Display Colors	262K	
10	Drive IC	S17789V3	
11	Luminance(cd/m2)	350 (TYP)	
12	Viewing Direction	All View	
13	Backlight	3 White LED Parallel	
14	Operating Temp.	-20°C~+70°C	
15	Storage Temp.	-30°C~+80°C	
16	Weight	2.7	

# 8

## 8.1

### 8.1.1

引脚名	引脚号	I/O	描述	备注
ANT_MAIN	35	AIO	主天线接口	50 Ω 特性阻抗。

#### 备注

模块支持 Wi-Fi Scan 功能。由于共用主天线接口，两种功能不可同时使用，时分复用，Wi-Fi Scan 只接收不发送。

工作频段	发送 (MHz)	接收 (MHz)
LTE-FDD B1	1920~1980	2110~2170
LTE-FDD B3	1710~1785	1805~1880
LTE-FDD B5	824~849	869~894
LTE-FDD B8	880~915	925~960
LTE-TDD B34	2010~2025	2010~2025
LTE-TDD B38	2570~2620	2570~2620
LTE-TDD B39	1880~1920	1880~1920
LTE-TDD B40	2300~2400	2300~2400
LTE-TDD B41	2535~2675	2535~2675

### 8.1.2

频段	最大值	最小值
LTE-FDD B1/B3/B5/B8	23 dBm ±2 dB	-39 dBm
LTE-FDD B34/B38/B39/B40/B41	23 dBm ±2 dB	-39 dBm

### 8.1.3

频段	接收灵敏度（典型值）（dBm）			3GPP 要求 （主集 + 分集）
	主集	分集	主集 + 分集	
LTE-FDD B1 (10 MHz)	-99.5 dBm	-	-	-96.3 dBm
LTE-FDD B3 (10 MHz)	-99.0 dBm	-	-	-93.3 dBm
LTE-FDD B5 (10 MHz)	-98.5 dBm	-	-	-94.3 dBm
LTE-FDD B8 (10 MHz)	-99.0 dBm	-	-	-93.3 dBm
LTE-TDD B34 (10 MHz)	-100.0 dBm	-	-	-96.3 dBm
LTE-TDD B38 (10 MHz)	-99.0 dBm	-	-	-96.3 dBm
LTE-TDD B39 (10 MHz)	-100.0 dBm	-	-	-96.3 dBm
LTE-TDD B40 (10 MHz)	-100.5 dBm	-	-	-96.3 dBm
LTE-TDD B41 (10 MHz)	-99.0 dBm	-	-	-94.3 dBm

## 8.2 GNSS

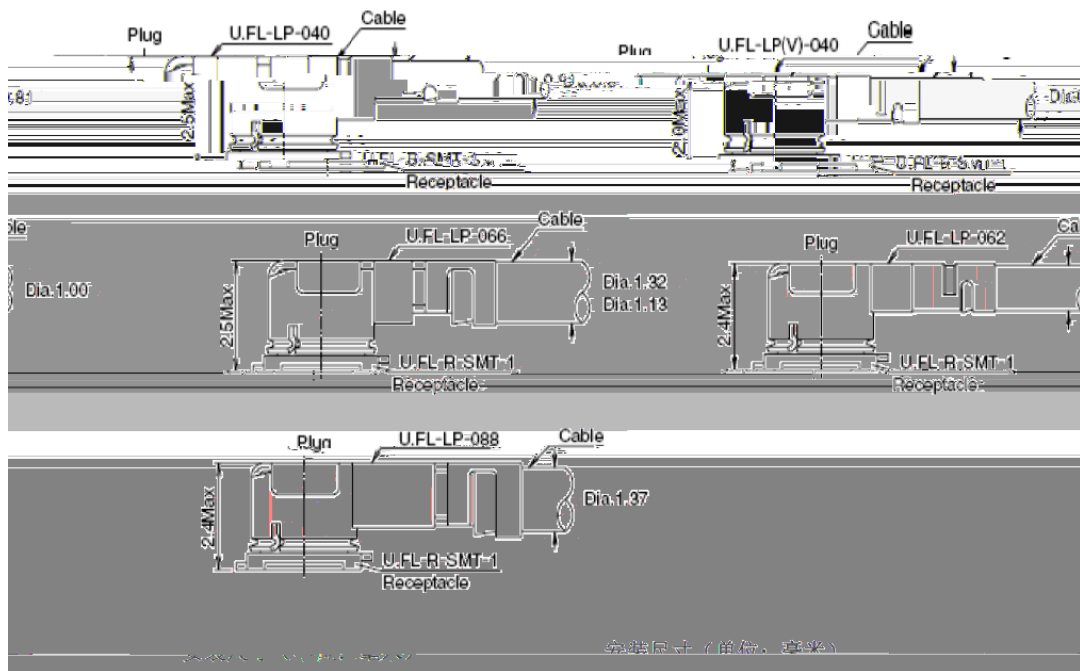
- 
- 
- 

### 8.2.1




Part No.	U.FL-LP-040	U.FL-LP-046	U.FL-LP-060	U.FL-LP-066
Mated Height	2.5mm Max. (2.4mm Nom.)	2.5mm Max. (2.4mm Nom.)	2.0mm Max. (1.9mm Nom.)	2.4mm Max. (2.3mm Nom.)
Applicable cable	Dia: 0.81mm Coaxial cable	Dia: 1.3mm and Dia: 1.32mm Coaxial cable	Dia: 0.81mm Coaxial cable	Dia: 1mm Coaxial cable
Weight (mg)	53.7	59.1	34.8	45.5
RoHS			YES	

U.FL-LP 连接线系列



**9**

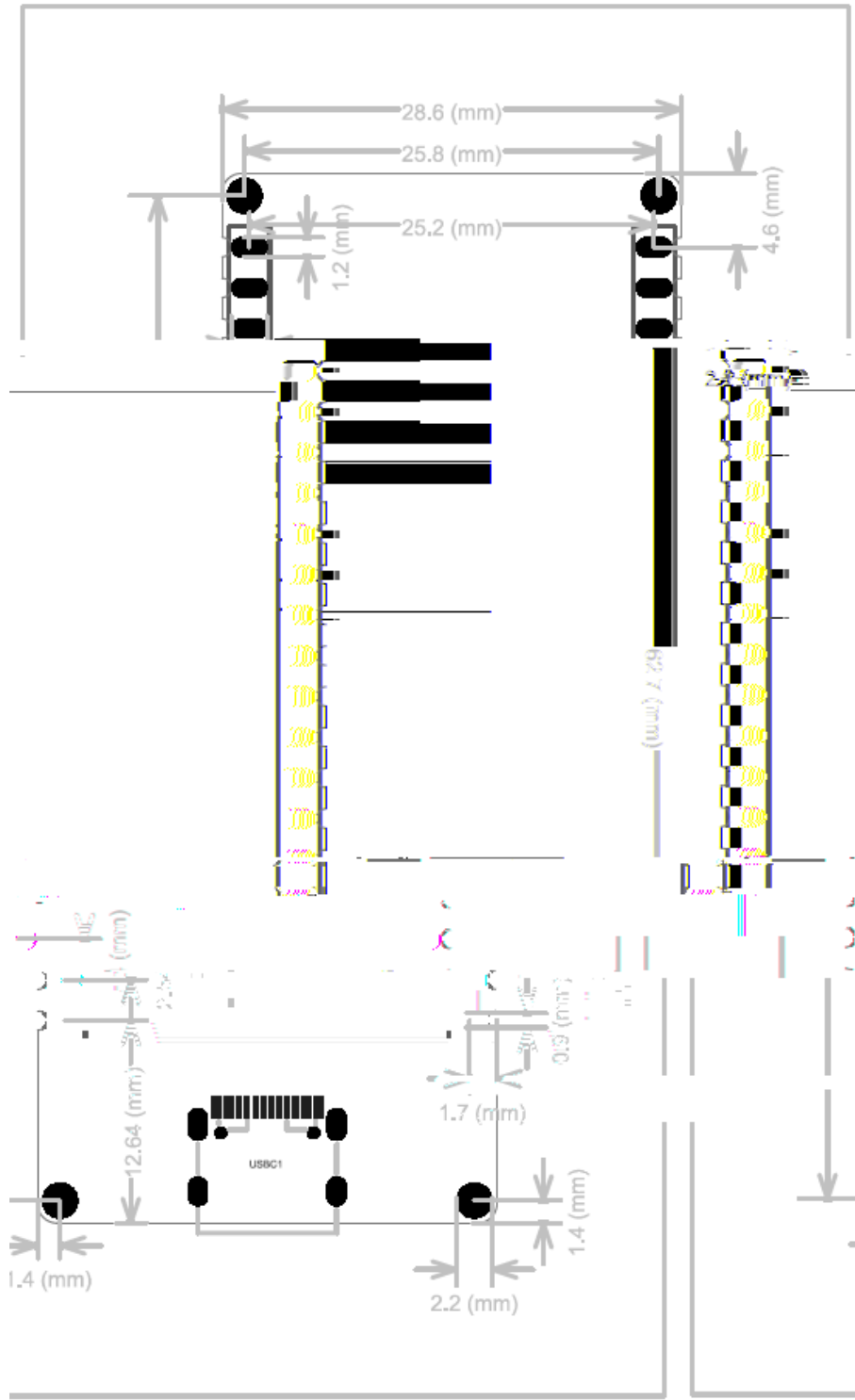
**9.1**


## 9.4

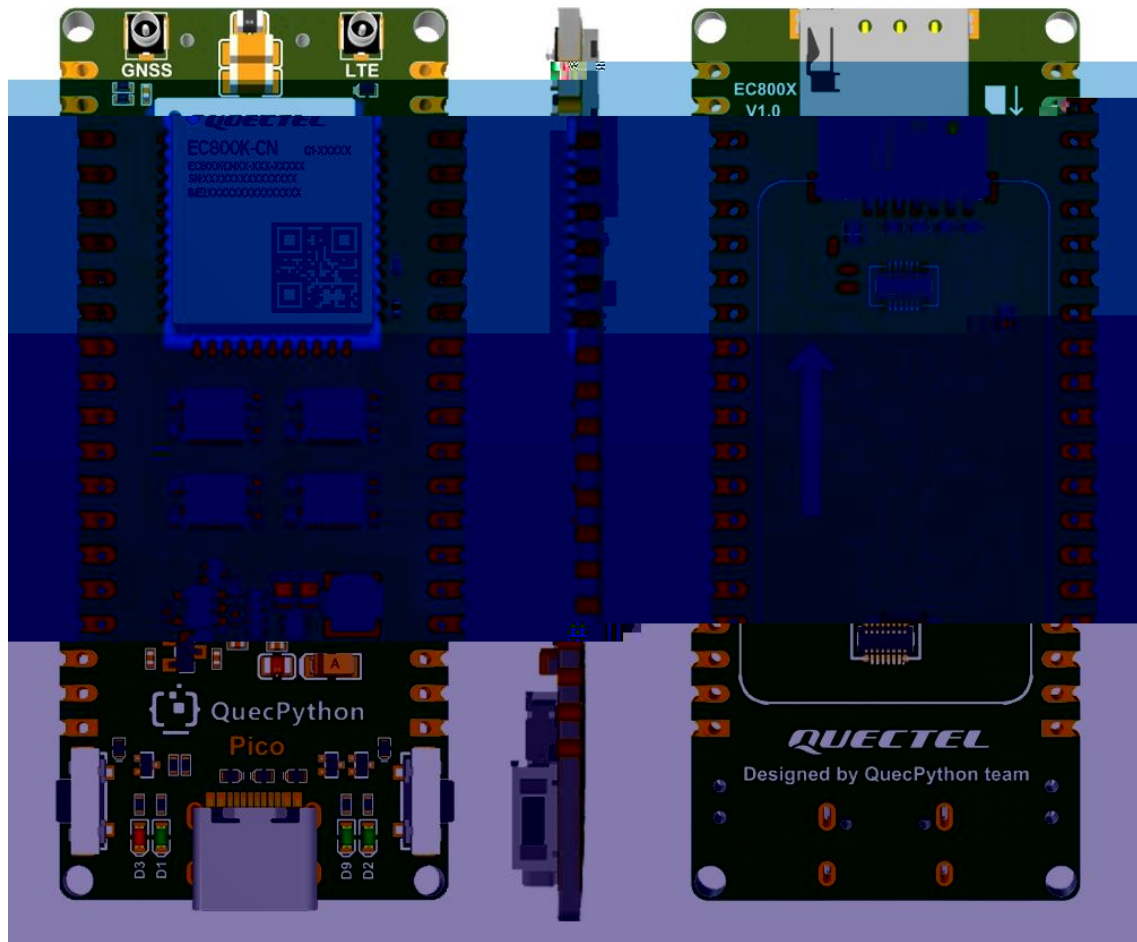
参数	最小值	典型值	最大值	单位
正常工作温度范围 <sup>4</sup>	-35	+25	+75	°C
扩展工作温度范围 <sup>5</sup>	-40	-	+85	°C
存储温度范围	-40	-	+90	°C

# 10

## 10.1

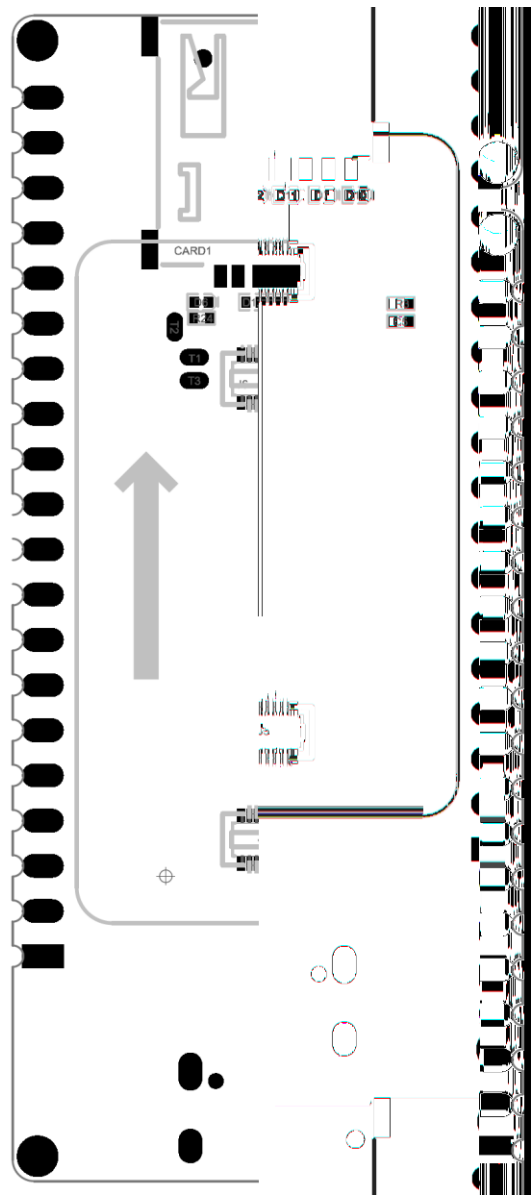
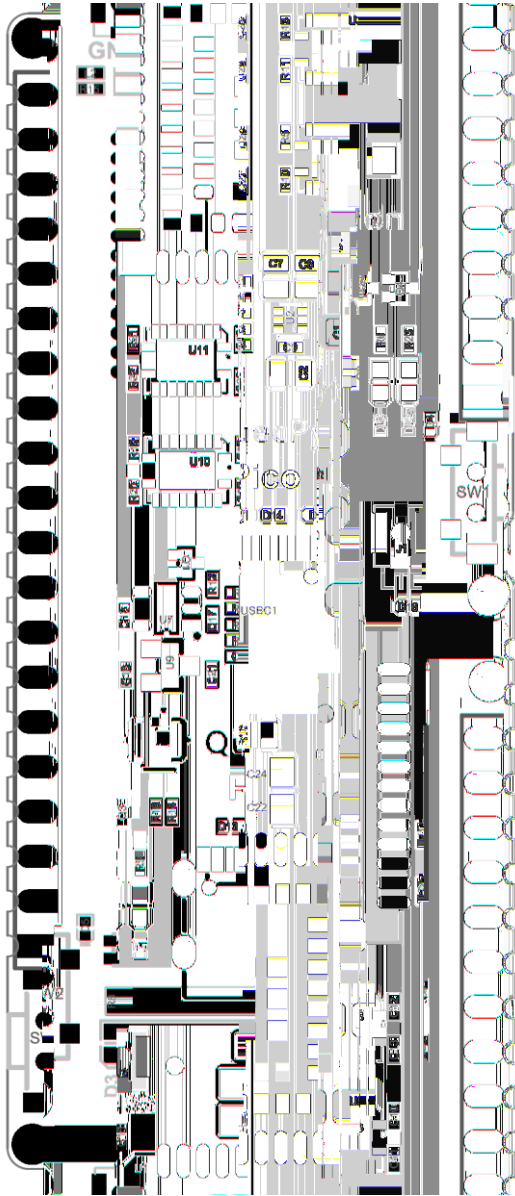


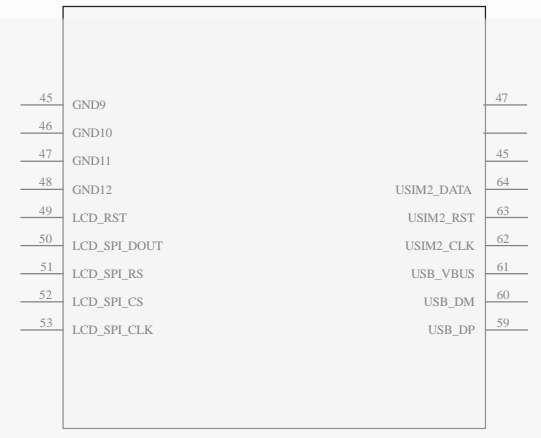
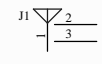
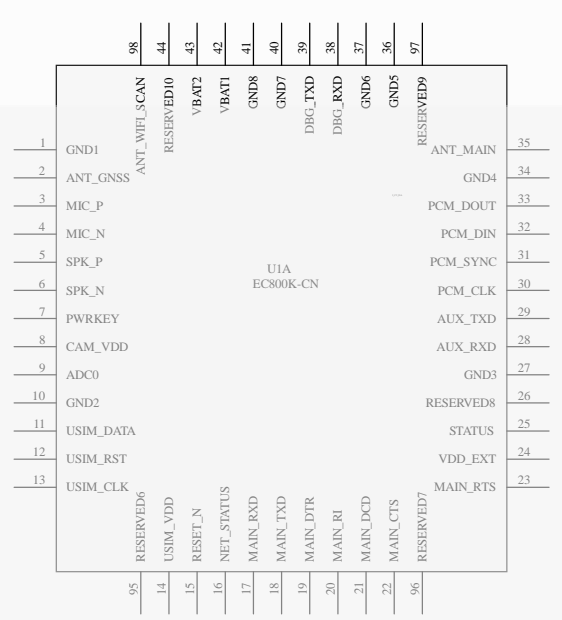
## 10.2



11

12





1

2

3

4

A

A

B

B

C

C

D

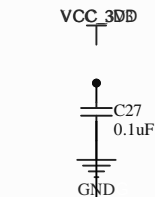
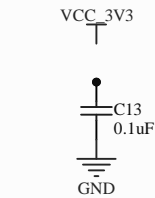
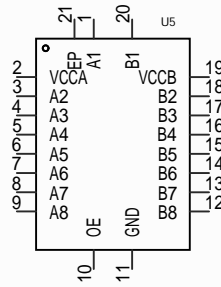
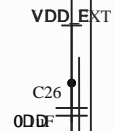
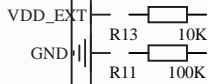
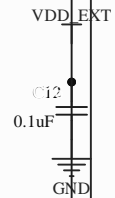
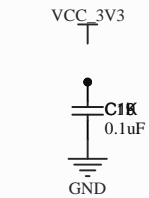
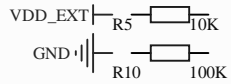
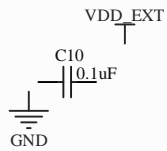
D

1

2

3

4



Level Translator



1

2

3

4

5

6

A

B

C

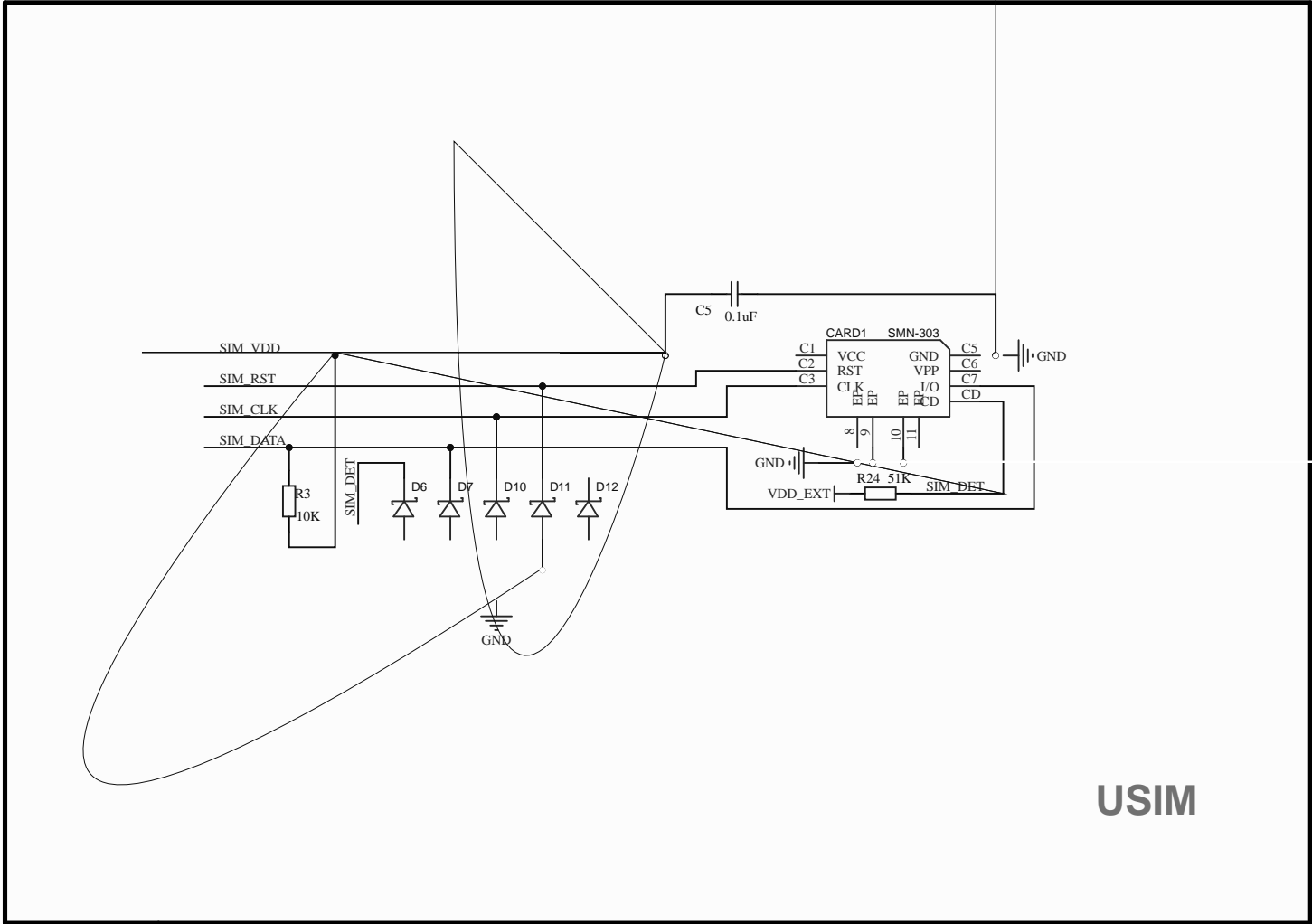
D

A

B

C

D



USIM

1

2

3

4

5

6